



# CATASTROPHIC LOSS BENEFITS CONTINUATION FUND

## ANNUAL REPORT

JULY 1, 2016-JUNE 30, 2017



## TABLE OF CONTENTS

<b>I. Executive Summary .....</b>	<b>1</b>
<b>II. Fund Background .....</b>	<b>2</b>
<i>Chart Total Paid and Outstanding Benefit Dollar .....</i>	<b>3</b>
<b>III. Benefit Eligibility .....</b>	<b>4</b>
<i>Chart Total Number of Eligible Claimants by Accident Year.....</i>	<b>5</b>
<i>Chart Current Age of All Open Eligible Claimants.....</i>	<b>6</b>
<i>Chart Total Number of Eligible Claimants by Catastrophic Injury.....</i>	<b>7</b>
<i>Chart Total Number of Claimants by Eligibility (Open &amp; Closed) .....</i>	<b>8</b>
<b>IV. Benefit Funding .....</b>	<b>9</b>
<i>Chart Total Payments by Financial Category.....</i>	<b>10</b>
<i>Chart Total Benefit Dollars Issued For the Last Ten Fiscal Years .....</i>	<b>11</b>
<b>V. Appeals and the Administrative Hearing Process .....</b>	<b>12</b>
<b>VI. Highlights of Fiscal Year 2016-2017</b>	
Negotiated Savings.....	<b>13</b>
Prescription Drug Program.....	<b>14</b>
Prescription Drug Payment Summary .....	<b>15</b>
CMS/MSPR .....	<b>16</b>
Insurance Fraud Investigations .....	<b>16</b>
Administrative Hearing .....	<b>16</b>

PENNSYLVANIA CATASTROPHIC LOSS BENEFITS  
CONTINUATION FUND

**EXECUTIVE SUMMARY**

The Pennsylvania Insurance Department's Bureau of Special Funds (Bureau) manages and oversees the administration activities of the Catastrophic Loss Benefits Continuation Fund (CAT Fund). The Bureau has the fiduciary responsibility to assure that all eligible claimants receive benefits in accordance with the Motor Vehicle Financial Responsibility Law (MVFRL). The MVFRL was enacted February 12, 1984 and amended by Act 24, which created the continuation of the CAT Fund on July 1, 1989.

A third party administrator, AmeriHealth Casualty Services/ACS Claim Service, Inc. is contracted to manage the claims administration activity on a daily basis. The current contract has been in effect since August 1, 2009.

The CAT Fund has the fiduciary responsibility to continue providing benefits to all eligible claimants and to evaluate any new applications for benefit eligibility. These claims are administered in a manner consistent with the MVFRL and the insurance industry's best claim practices to include:

- Researching and investigating the eligibility of new CAT Fund applicants in accordance with the eligibility criteria set forth in the MVFRL
- Recommending payment of CAT Fund benefits in a timely manner for medical treatment and rehabilitative services, in excess of \$100,000, deemed medically necessary, reasonable and accident related
- Recommending denial of CAT Fund benefits for services which do not meet the criteria
- Working closely with the CAT Fund and legal counsel should a denial be appealed and disputed/tried at the Insurance Department's Administrative Hearings level
- Transferring all invoices for CAT Fund benefits deemed medically necessary, reasonable, and accident related that are recommended for payment to the Commonwealth for payment by the Commonwealth's Department of Treasury
- Seeking Fund approval for recommended expense payments for other related services such as legal fees, and other allocated expenses, etc.

As of June 30, 2017, the CAT Fund had an outstanding claim reserve of \$68,511,540. Ongoing claim reviews and re-evaluation assist the Bureau and the Bureau's actuary in determining the appropriate dollar funding requirements to meet the CAT Fund's fiduciary responsibility.

PENNSYLVANIA CATASTROPHIC LOSS BENEFITS  
CONTINUATION FUND

**FUND BACKGROUND**

*In accordance with the Motor Vehicle Financial Responsibility Law (MVFRL) enacted on February 12, 1984 and amended by Act 24 on July 1, 1989, the Pennsylvania legislature established the Catastrophic Loss Benefits Continuation Fund (here forward referred to as CAT Fund). Coverage is provided by the CAT Fund for eligible individuals who suffered catastrophic losses arising from the maintenance or use of a motor vehicle on or after October 1, 1984 to June 1, 1989, with limited eligibility through December 31, 1989.*

The CAT Fund assures that all eligible claimants receive benefits funding in accordance with the Motor Vehicle Financial Responsibility Law (MVFRL). The CAT Fund has the fiduciary responsibility to provide claims investigation and timely payment of medical benefits to any claimant deemed eligible in accordance with the MVFRL. The CAT Fund's purpose is to ensure that every eligible claimant of the Fund is treated fairly in accordance with MVFRL's requirements, and to complete its responsibilities in a cost effective, cost efficient and responsible manner.

The MVFRL 75 Pa. C.S. created the Catastrophic Loss Trust Fund effective October 1, 1984. Act 144 of 1988, 75 Pa C.S. 1761-1769, repealed the provisions of the MVFRL but it did not address the continuation of benefits under the funding established by the MVFRL. Act 4 of 1989, 75 Pa. C.S. 1798.1 and 1798.2 terminated eligibility effective June 1, 1989 and provided for limited continued eligibility through December 31, 1989.

Act 24 of 1989 created the continuation of benefits for those individuals who were catastrophically injured in accordance with the MVFRL. In addition, Act 24 imposed

surcharges on motor vehicle violations (such as speeding tickets and moving violations) ranging from \$30 to \$300 and required the monies be used to pay for the continuation of benefits and administration of the CAT Fund. Act 13 of 2002 redirected these surcharges to a different Commonwealth program effective January 1, 2004.

As of June 30, 2017, since its inception, the CAT Fund has provided a total of \$532,223,051 in benefits for medical treatment and rehabilitative services on behalf of 1,884 eligible claimants.

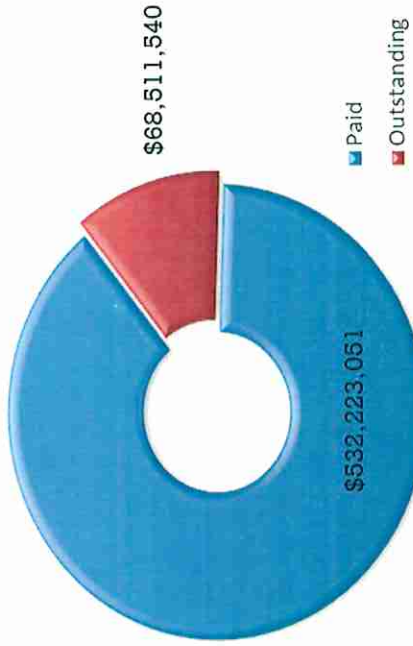
The Pennsylvania Insurance Department's Bureau of Special Funds oversees the administration of the CAT Fund. A contracted third party administrator, AHCS/ACS Claim Service, Inc. provides claims administration services for the CAT Fund.

Today, a similar benefit called the Extraordinary Medical Benefit is offered by law through automobile insurance as a voluntary coverage. To find out more about the Extraordinary Medical Benefit, contact your insurance agent or insurance carrier.

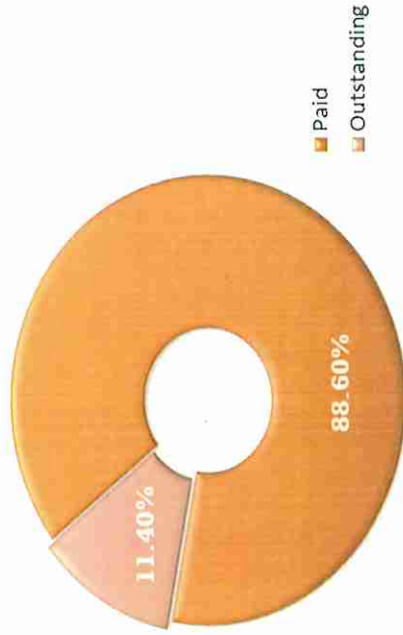
PENNSYLVANIA CATASTROPHIC LOSS BENEFITS  
CONTINUATION FUND

Total Paid and Outstanding Benefit Dollar

Incurred Dollars as of June 30, 2017



Incurred Percentage as of June 30, 2017



PENNSYLVANIA CATASTROPHIC LOSS BENEFITS  
CONTINUATION FUND

**BENEFIT ELIGIBILITY**

An individual who has suffered injuries in a motor vehicle accident may apply for CAT Fund benefits if the individual meets the following eligibility criteria:

1. The individual was a resident of this Commonwealth at the time of the accident.
2. The injury was the result of the maintenance or use of a motor vehicle and the accident occurred on or after October 1, 1984, and prior to June 1, 1989. Eligibility may continue between June 1, 1989 and December 31, 1989 only if the accident involved a motor vehicle for which the CAT Fund fee had been paid and the accident occurred during the registration year for which the charge was paid. Other restrictions may apply.

*Most motor vehicle injuries eligible for CAT Fund benefits occurred in 1988 (512) followed by 1987 (440) and 1986 (396). Today 65.7 percent of the open eligible claimants are between ages of 41 and 60.*

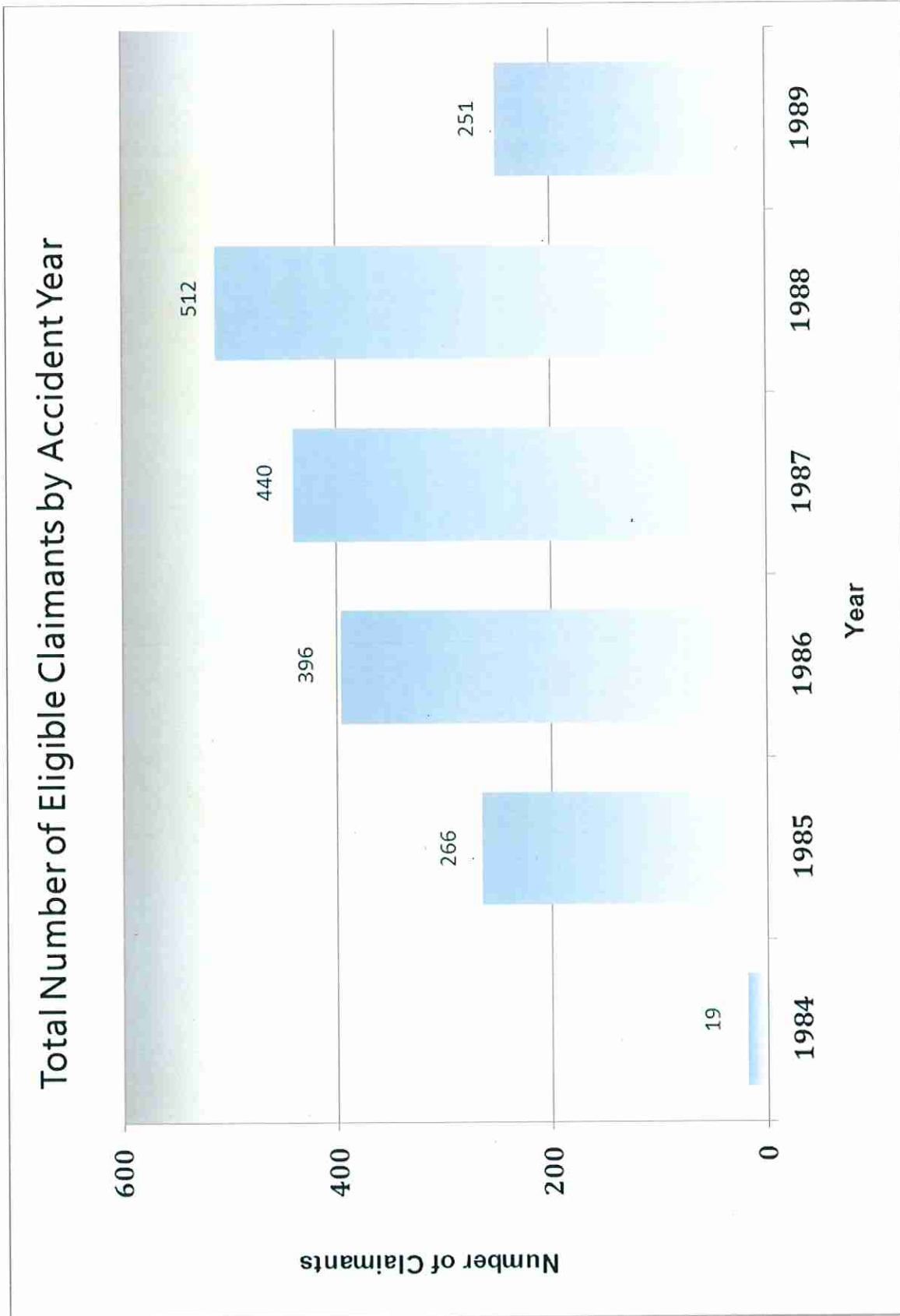
3. The auto accident occurred in the United States, its territories or possessions or Canada.
4. The injured person was not the driver or occupant of a recreational vehicle not intended for highway use, a motorcycle, a motorized pedal cycle, a motor-driven cycle or any vehicle required to be registered under 75 PA.C.S (relating to the Vehicle Code) but not subject to the CAT Fund charge.
5. As a result of the motor vehicle accident, the individual incurred reasonable and medically necessary medical and rehabilitative expenses exceeding \$100,000.

*The majority of the injuries sustained by the CAT Fund claimants are of a catastrophic nature and include head injuries, multiple fractures, quadriplegia and paraplegia.*

6. The individual's medical and rehabilitative expenses were not covered by workers' compensation.
7. The individual's medical and rehabilitative expenses were not covered by a policy issued under the Pennsylvania No-fault Motor Vehicle Insurance Act (Repealed).
8. The individual complied with the registration requirement of the PA Vehicle Code (Chapter 13) and had paid the applicable CAT Fund charge for any vehicle registered in the Commonwealth of Pennsylvania.

*The CAT Fund continues to receive new applications for CAT Fund benefits. Out of a total of 2,875 claimants, 984 are considered ineligible, 7 are under review for eligibility and a total of 1,884 are considered eligible. Currently, 408 of those considered eligible are open and actively receiving ongoing benefits.*

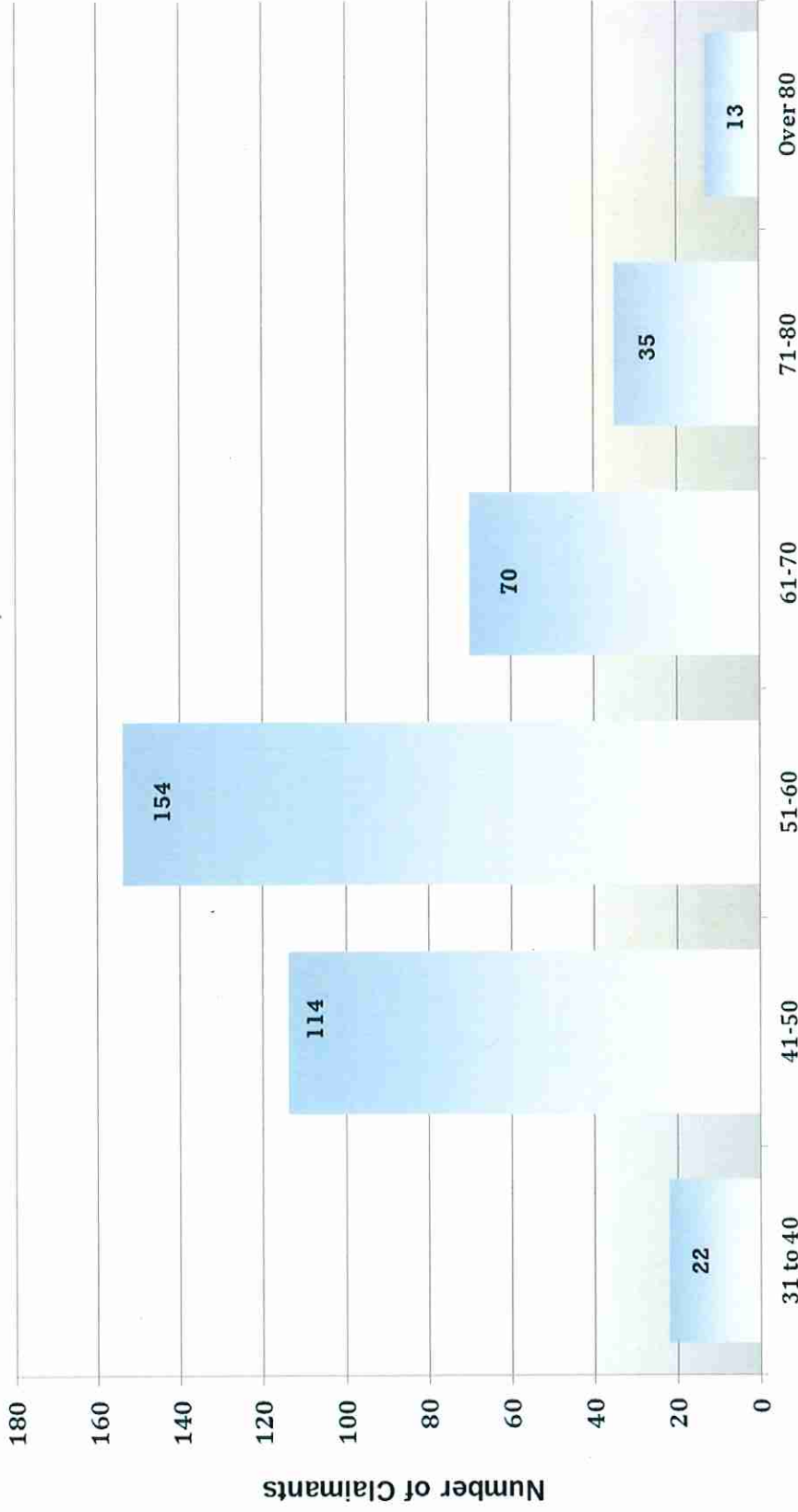
PENNSYLVANIA CATASTROPHIC LOSS BENEFITS  
CONTINUATION FUND





PENNSYLVANIA CATASTROPHIC LOSS BENEFITS  
CONTINUATION FUND

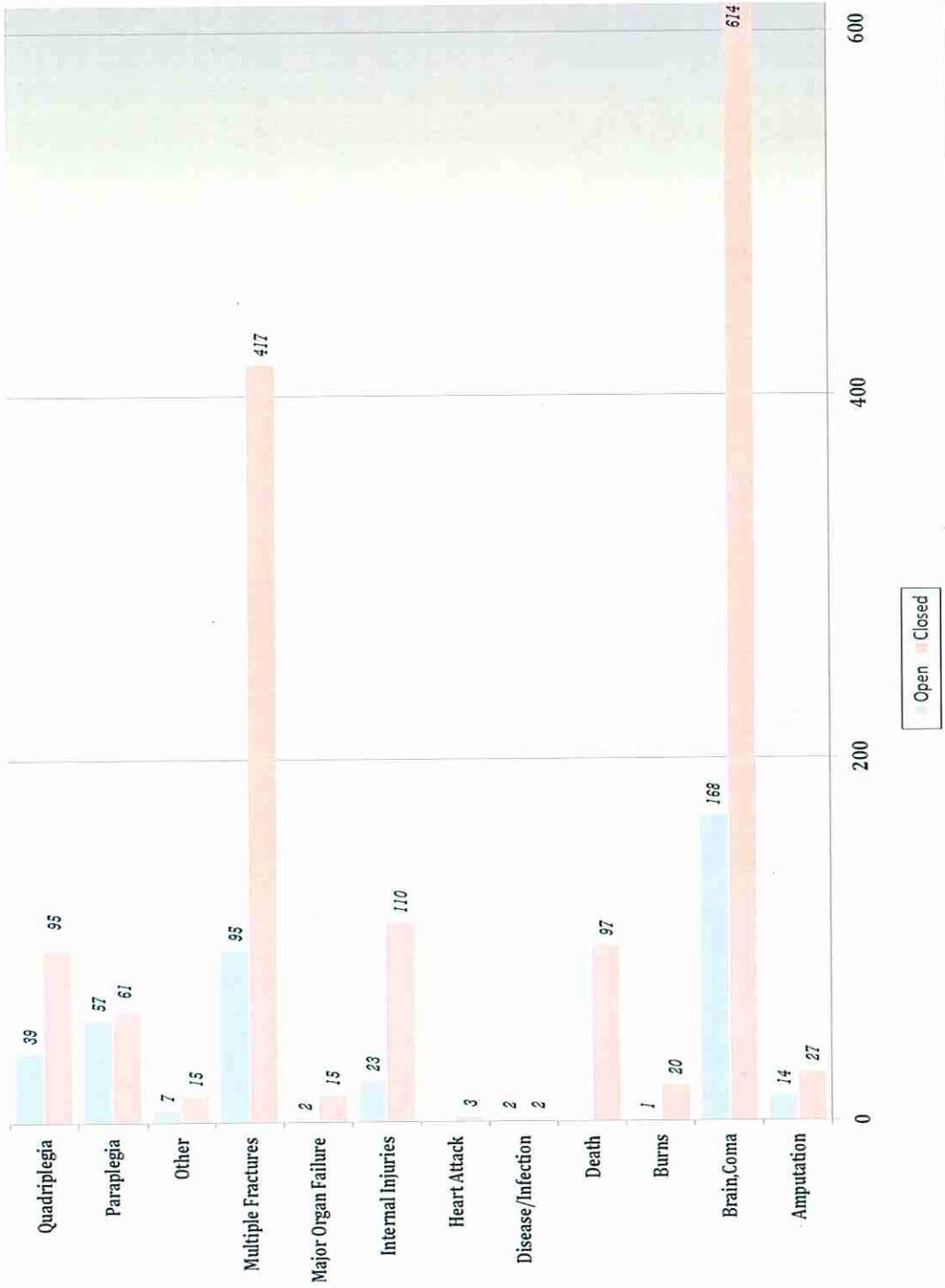
Current Age of All Open Eligible Claimants





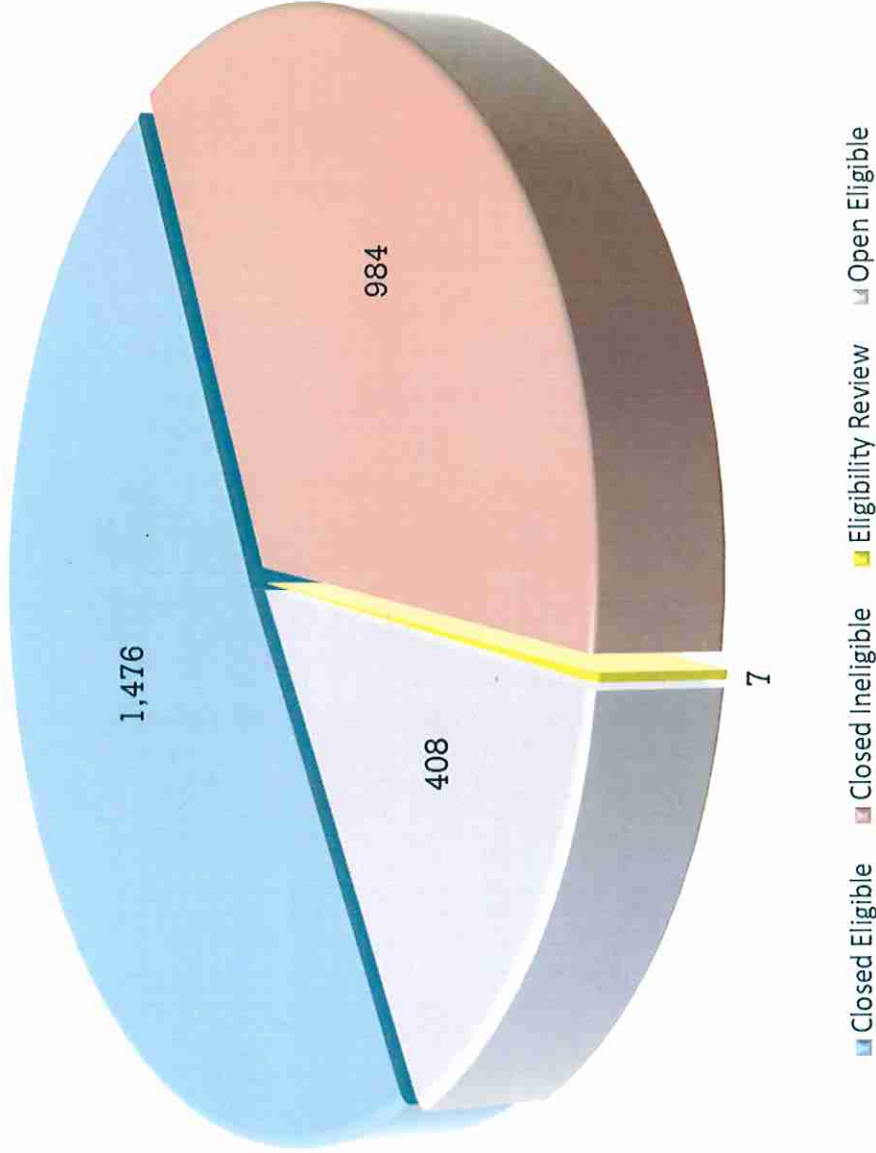
PENNSYLVANIA CATASTROPHIC LOSS BENEFITS  
CONTINUATION FUND

Total Number of Eligible Claimants by Catastrophic Injury



PENNSYLVANIA CATASTROPHIC LOSS BENEFITS  
CONTINUATION FUND

Total Number of Claimants by Eligibility (Open & Closed)



PENNSYLVANIA CATASTROPHIC LOSS BENEFITS  
CONTINUATION FUND

**BENEFIT FUNDING**

As the third party administrator for the CAT Fund, AHCS/ACS Claim Service, Inc. makes a recommendation relative to the eligibility of the claimant. Once a claimant's eligibility has been established, AHCS/ACS Claim Service, Inc. reviews all requests and invoices for benefits to determine if the medical treatment or rehabilitative service is deemed medically necessary, reasonable and accident related. AHCS/ACS also reviews such requests and invoices to see that the medical treatment or rehabilitative service represents the most prudent expenditure of funds.

CAT Fund benefits are provided to eligible claimants at the catastrophic level of coverage or for payment of expenses for medical treatment and rehabilitative services in excess of \$100,000. The CAT Fund is not responsible for the first \$100,000 of expenses for medical treatment and rehabilitative services incurred by an eligible claimant.

The maximum benefit paid by the CAT Fund on behalf of any one eligible claimant is \$50,000 per annual limit year and \$1,000,000 lifetime aggregate. During the first 18 months after the motor vehicle accident, benefits are provided without regard to the \$50,000 per annual period limit but subject to the \$1,000,000 lifetime aggregate.

*Through June 30, 2017, the CAT Fund has provided over \$532 million in benefits for medical treatment and rehabilitative services on behalf of the 1,884 eligible CAT Fund claimants.*

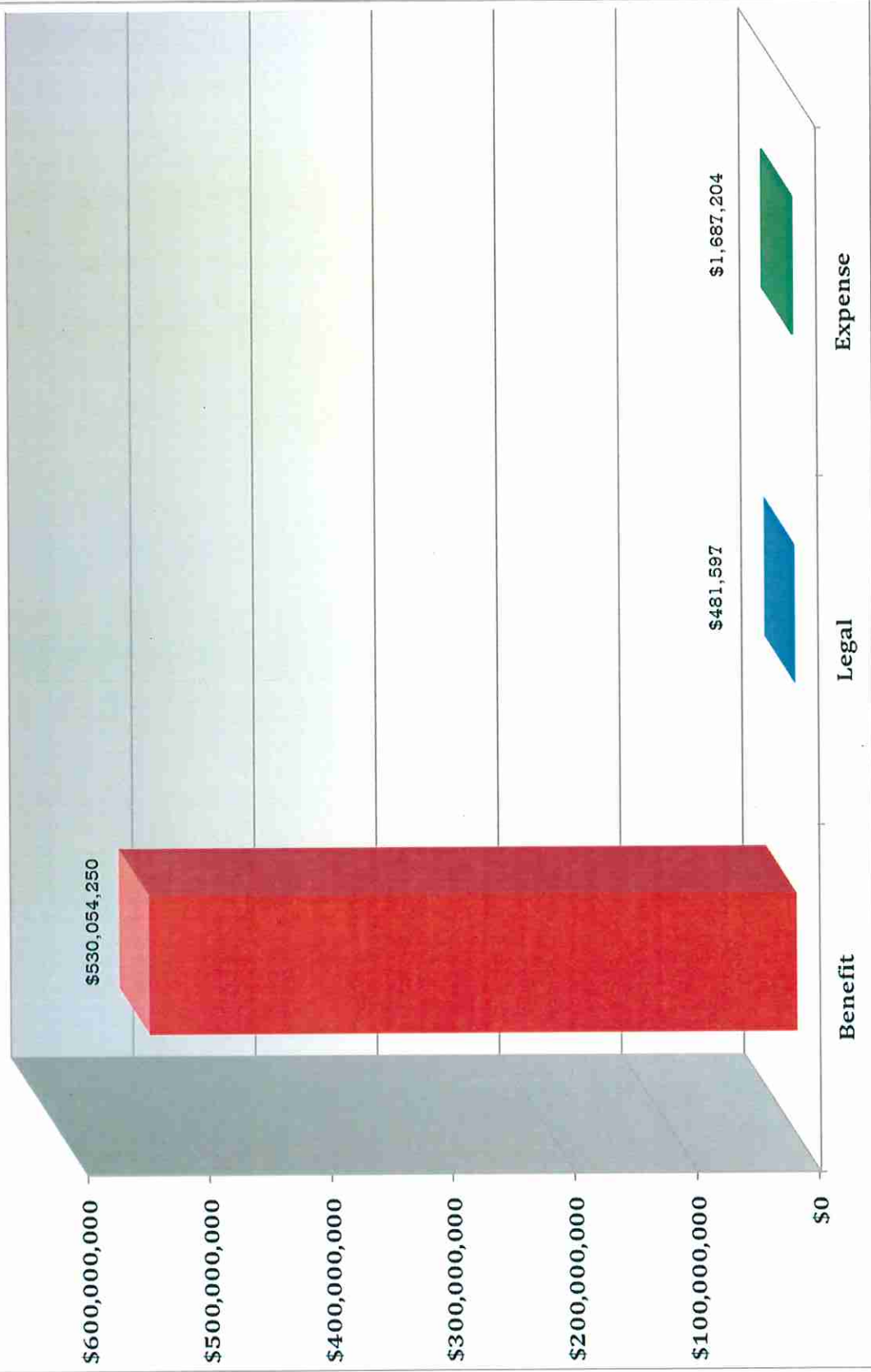
The CAT Fund is the primary funding source for medical treatment and rehabilitative expenses deemed medically necessary, reasonable and related to an eligible claimant's motor vehicle accident. The CAT Fund coordinates with the claimants' secondary funding sources such as Medicare, Medicaid, private and/or group health insurance carriers. Insurers may confirm whether the CAT Fund is the primary payer on a particular claim by contacting AHCS/ACS Claim Service, Inc.

*To date, 128 claimants have reached the \$1,000,000 maximum benefit expenditure. In the next year, 3 claimants are expected to expend the lifetime maximum as well. Over the last year, the CAT Fund closed 16 claims and reopened 3 claims. There were no new open claims.*

All requests or invoices for CAT Fund benefits should be forwarded to:  
AHCS/ACS Claim Service, Inc./CAT Fund  
P.O. Box 8861, Camp Hill, PA 17001

PENNSYLVANIA CATASTROPHIC LOSS BENEFITS  
CONTINUATION FUND

Total Payments by Financial Category as of June 30, 2017



PENNSYLVANIA CATASTROPHIC LOSS BENEFITS  
CONTINUATION FUND

Total Benefit Dollars Issued For the Last Ten Fiscal Years



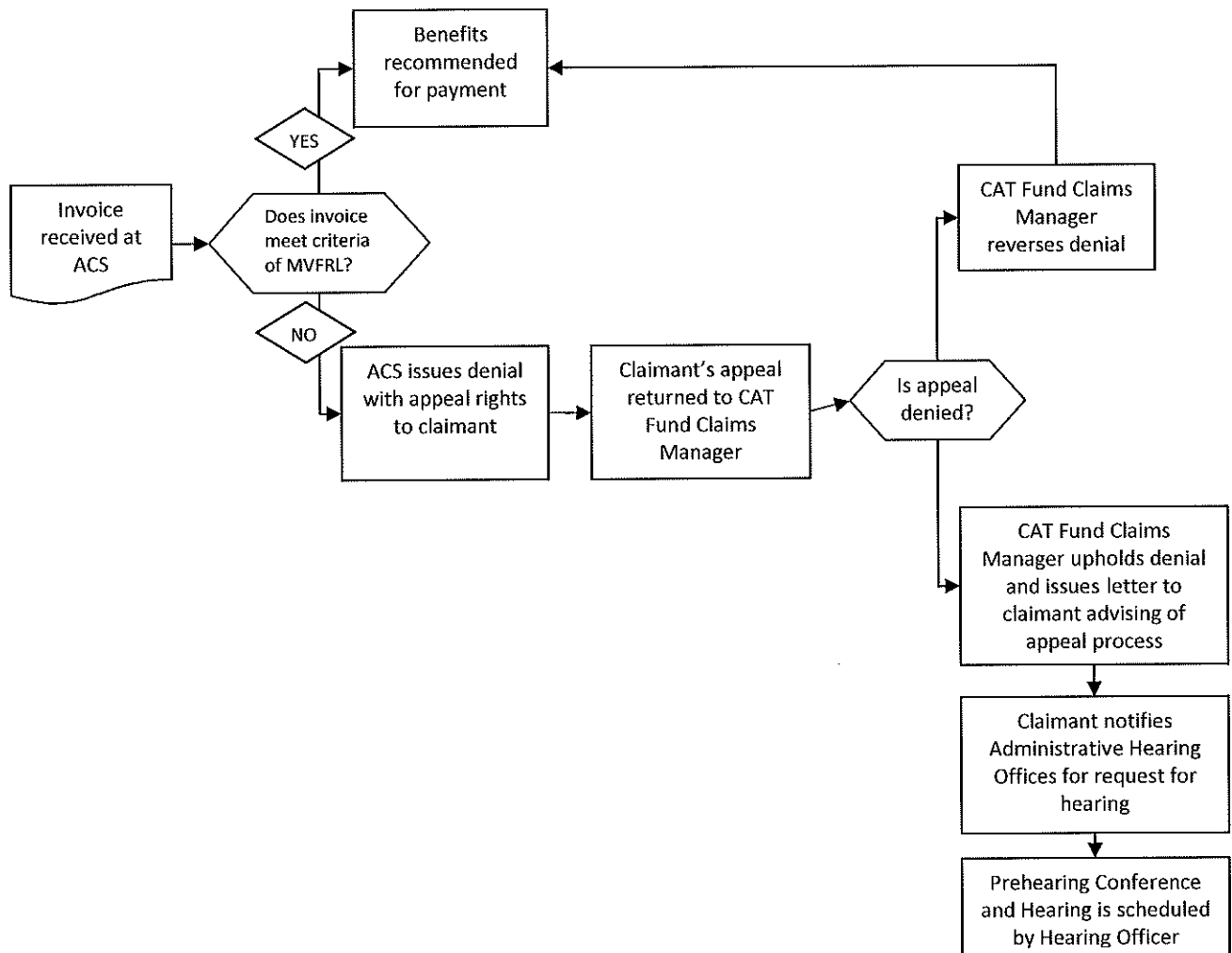
PENNSYLVANIA CATASTROPHIC LOSS BENEFITS  
CONTINUATION FUND

**APPEALS AND THE ADMINISTRATIVE HEARING PROCESS**

Claimants who do not agree with a determination made by the CAT Fund may dispute the determination as outlined in the regulations of Pennsylvania Insurance Department, 31 Pa. Code 67.6.

If a claim is denied, the claimant or authorized representative will receive specific written instructions on the appeal process. At the first level of the appeal process, a claimant is issued written notification from the CAT Fund Claims Manager advising if the denial is upheld or reversed. If the denial is reversed, the invoice is processed for payment.

If the denial is upheld, the claimant receives written instruction on how to request a formal administrative hearing. A formal administrative hearing is conducted before a hearing officer appointed by the Insurance Commissioner. It is the claimant's responsibility to prove that the service(s) in dispute is/are medically necessary, reasonable and accident related.



PENNSYLVANIA CATASTROPHIC LOSS BENEFITS  
CONTINUATION FUND

**HIGHLIGHTS OF 2016-2017**

**NEGOTIATED SAVINGS**

The CAT Fund utilizes cost saving programs to conserve benefit dollars for its claimants. A portion of the cost saving programs includes concepts from past legislative amendments contained in the MVFRL 1990 Act 6 amendment.

By using ACT 6 repricing information, ACS negotiates payment amounts with providers of medical treatment and rehabilitative services including hospitals, doctors, physical therapists, and orthotic/prosthetic suppliers.

As illustrated in the chart below, using the negotiated savings process has allowed the CAT Fund to save a total of \$1,259,633.93 in claimant benefits. In instances where a provider does not accept Act 6 repricing, the CAT Fund proactively contacts providers to negotiate and secure an agreed upon bill amount for services rendered.

<b>MONTH</b>	<b>CHARGED</b>	<b>PAID</b>	<b>SAVINGS</b>	<b>NEGOTIATION FEES</b>	<b>NET SAVINGS</b>
July-2016	\$186,953.27	\$68,565.54	\$118,387.73	\$1,215.50	\$117,172.23
August-2016	\$208,439.56	\$87,341.86	\$121,097.70	\$1,089.50	\$120,008.20
September-2016	\$185,235.66	\$80,473.08	\$104,762.58	\$1,018.50	\$103,744.08
October-2016	\$92,519.80	\$44,149.89	\$48,369.91	\$951.50	\$47,418.41
November-2016	\$188,143.00	\$67,642.01	\$120,500.99	\$757.00	\$119,743.99
December-2016	\$271,390.81	\$120,456.19	\$150,934.62	\$1,424.50	\$149,510.12
January-2017	\$414,522.12	\$133,545.93	\$280,976.19	\$1,389.00	\$279,587.19
February-2017	\$120,414.45	\$60,944.48	\$59,469.97	\$1,148.50	\$58,321.47
March-2017	\$344,914.63	\$188,985.82	\$155,928.81	\$1,413.00	\$154,515.81
April-2017	\$36,483.06	\$14,493.67	\$18,071.72	\$331.00	\$17,740.72
May-2017	\$105,854.74	\$50,662.50	\$55,192.24	\$898.50	\$54,293.74
June-2017	\$93,288.72	\$54,949.75	\$38,338.97	\$761.00	\$37,577.97
<b>TOTALS</b>	<b>\$2,248,159.82</b>	<b>\$972,210.72</b>	<b>\$1,272,031.43</b>	<b>\$12,397.50</b>	<b>\$1,259,633.93</b>
<i>Monthly Average</i>	<i>\$187,346.65</i>	<i>\$81,017.56</i>	<i>\$106,002.62</i>	<i>\$1,033.13</i>	<i>\$104,969.49</i>



PENNSYLVANIA CATASTROPHIC LOSS BENEFITS  
CONTINUATION FUND

**PRESCRIPTION DRUG PROGRAM**

Effective July 1, 2010, PACE was contracted to provide prescription medication program services to the CAT Fund in a continuing effort to effectively manage benefit dollar savings for prescription drugs. The PACE program is widely known for its comprehensive pharmaceutical cost management directives which include the elimination of out of pocket expenses for claimants. PACE uses Magellan Health Services as its administrator.

Prior to July 1, 2010, TechHealth was the sole prescription billing program utilized to save CAT Fund claimants additional dollars for the purchase of prescription drugs. Today, TechHealth is utilized to provide prescription billing services for out-of-state CAT Fund claimants and pharmacies not contracted with PACE.

The PACE program provides the adjuster with direct access to a pharmacist as well as close communication with the Magellan Health Services administrators, allowing for increased efficiency in managing claimants' prescription formularies. In addition to these benefits, the PACE program provides the adjusters with various reports to assist in managing the claimants' prescriptions. These reports include:

- Opiate Review – monitoring for potential misuse.
- Max Dose – flagging claimants that hit or exceed the maximum adult or elderly dose.
- Therapeutic Duplication – assessing if claimant is using more than one drug in a class.
- Age Appropriate – validate prescribed dose with claimant's age.

AHCS/ACS Claim Service, Inc. adjusters closely monitor the prescription benefits and serve as the central contact to verify that the prescribed medications meet the benefit criteria. Adjusters have the immediate ability to approve or deny prescription eligibility statuses as necessary by phone, email or online via the website. Claimants and pharmacies have access to customer service by phone.

The CAT Fund utilizes various processing edits available via the PACE system to monitor pharmaceutical use by claimants receiving CAT Fund benefits. This coordinated effort between PACE and the CAT Fund results in more control over potential abuse of narcotics, duplicate therapeutic medications, and excessive prescriptions for medications in the elderly. When providers consider alternative medications, or switch from brand name to generic drugs, this can mean a substantial savings for the claimant.

PENNSYLVANIA CATASTROPHIC LOSS BENEFITS  
CONTINUATION FUND

**PRESCRIPTION DRUG PAYMENT SUMMARY**

The majority of prescriptions paid for by the CAT Fund are dispensed through PACE or TechHealth. The chart below reflects the total number of prescription payments, total savings, and the number of prescriptions dispensed through each of these programs.

Outside of the PACE and TechHealth programs, an additional \$25,264 was paid to providers, pharmacies and/or claimants for reimbursement of their out-of-pocket expenses. The majority of payments (63%) outside of PACE and TechHealth were paid to providers for pain pump medication refills.

<b>PACE</b>		<b>TECHHEALTH</b>	
<i>Charged</i>	<i>\$1,298,268</i>	<i>Charged</i>	<i>\$508,422</i>
<i>Reduction</i>	<i>\$556,463</i>	<i>Reduction</i>	<i>\$150,654</i>
<i>Paid</i>	<i>\$741,805</i>	<i>Paid</i>	<i>\$357,768</i>
<i>Admin. Charge</i>	<i>\$38,985</i>	<i>Admin. Charge</i>	<i>\$0</i>
<i>Number Dispensed</i>	<i>4635</i>	<i>Number Dispensed</i>	<i>1443</i>

Considering only the PACE and TechHealth programs, PACE processed 76% of the total number of prescriptions and 67% of the dollar value of prescriptions. TechHealth processed 24% of the total number of prescriptions and 33% of the total cost. PACE generated 39% net savings under the charged amount. TechHealth was able to generate 29% savings under the charged amount. Overall, both programs result in significant savings for the CAT Fund claimants and the CAT Fund.

PENNSYLVANIA CATASTROPHIC LOSS BENEFITS  
CONTINUATION FUND

**CENTERS FOR MEDICARE & MEDICAID SERVICES/  
MEDICARE SECONDARY PAYER RECOVERY CONTRACTOR**

AHCS/ACS Claim Service, Inc. identifies the CAT Fund claimants which are Medicare beneficiaries and reports them, as required, to CMS as part of Section 111 of the Medicare, Medicaid and SCHIP Extension Act (MMSEA) of 2007. In June of each calendar year, AHCS/ACS Claim Service, Inc. sends Consent to Release forms to Medicare eligible claimants along with the Annual Coordination of Benefits letter.

A CMS MSPRC Lien process was developed to respond to correspondence received from MSPRC, including but not limited to Conditional Payment Notice (CPN), Conditional Payment Letter (CPL) and Recovery Demand Letter. This past year, we received five Conditional Payment Notices and two Demand letters. We expect to continue to receive CMS MSPRC letters as the majority of CAT Fund claimants are Medicare recipients.

**INSURANCE FRAUD INVESTIGATIONS**

Pursuant to Act 166 of 1994, the Office of Attorney General was granted specific authority to create an Insurance Fraud Section empowered to investigate and prosecute insurance fraud. The CAT Fund considers falsification of a request or invoice for CAT Fund benefits insurance fraud.

The CAT Fund continues to receive restitution for past fraudulent criminal activity. These payments are applied to the appropriate claimant's benefits account. AHCS/ACS Claim Service, Inc. monitors claims on a routine basis and will investigate any potential cases of fraudulent activity. Where appropriate, AHCS/ACS Claim Service, Inc. will refer the matter to the Office of Attorney General for criminal investigation.

**ADMINISTRATIVE HEARINGS**

There were no CAT Fund Administrative Hearings held during this fiscal year.